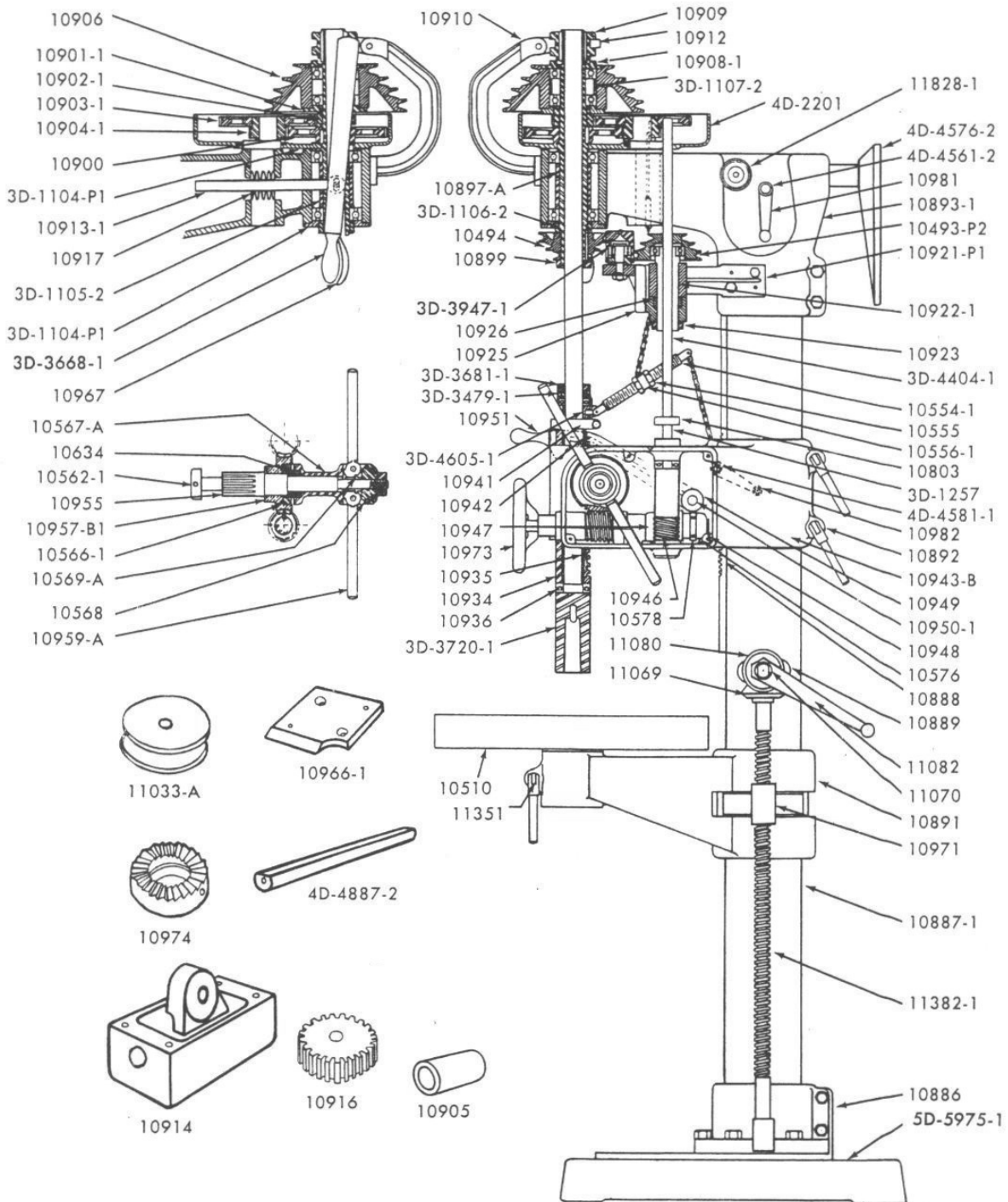
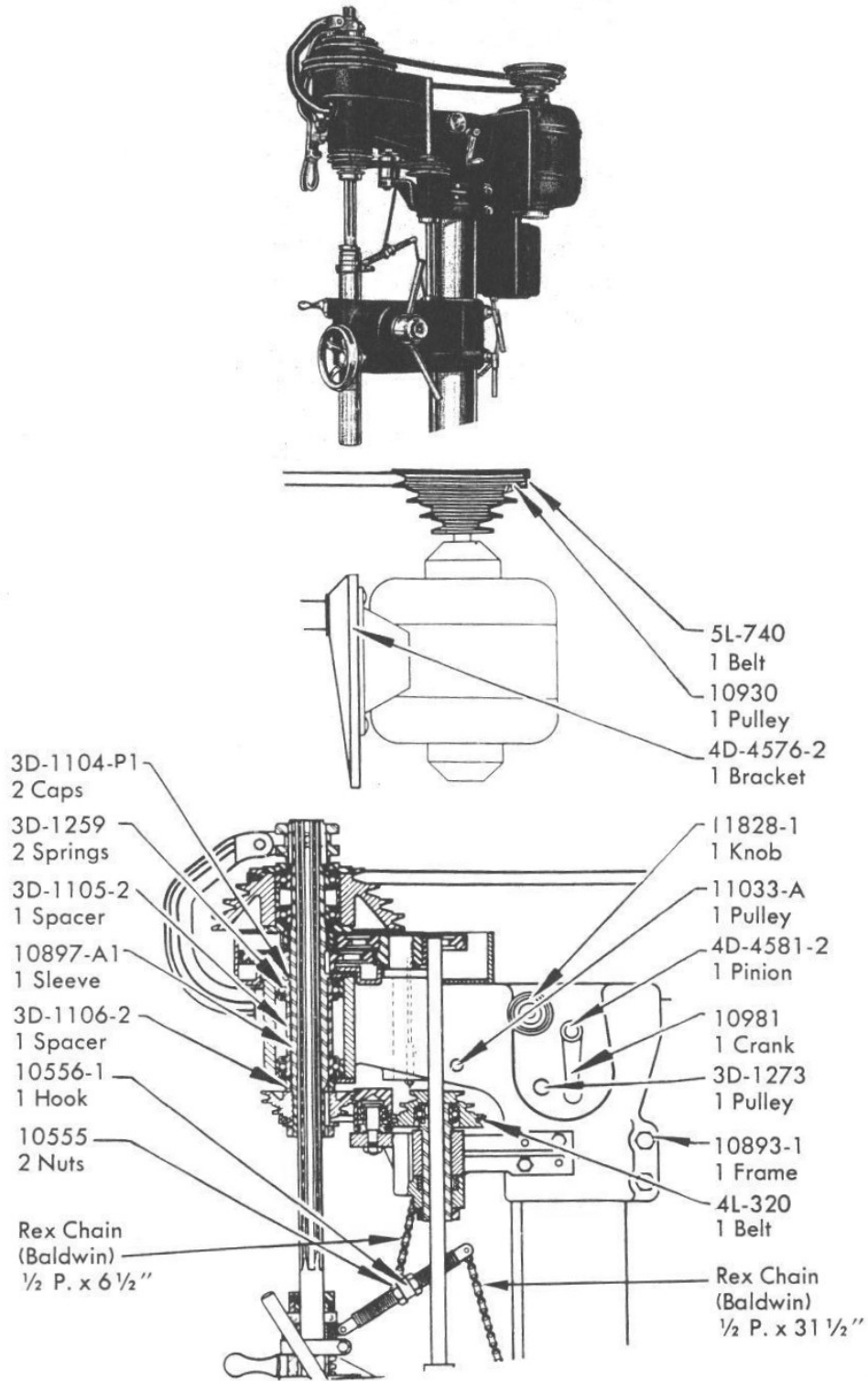


REPAIR PARTS—NO. 22 DRILL



Exclusive Rights and Ownership of Buffalo Machines, Inc, formerly known as Buffalo Forge Machine Tool Division Any duplication, sale of this information without written permission by Owner, will constitute legal proceedings in accordance with CopyRight
NOT FOR SALE OR DUPLICATION

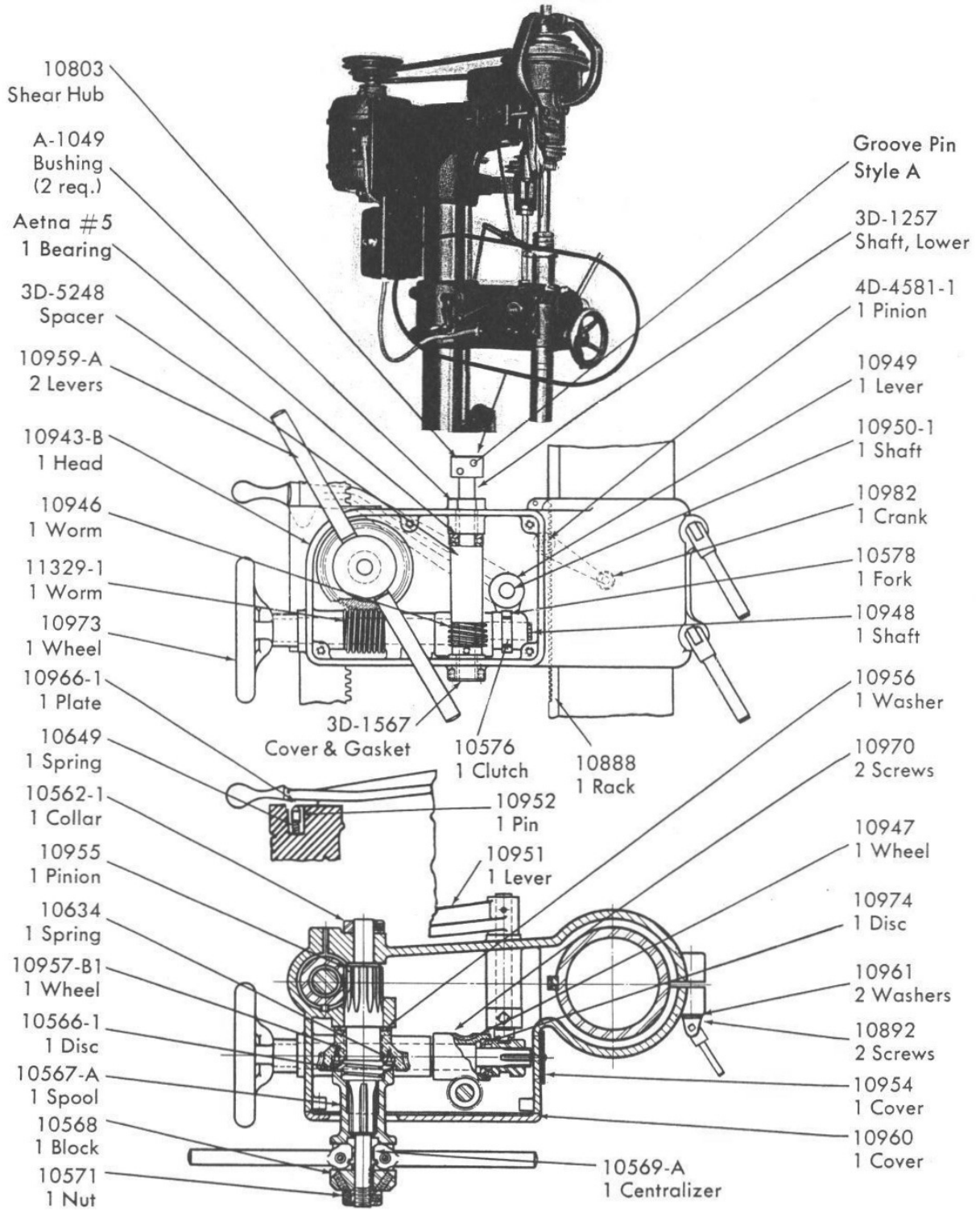
REPAIR PARTS—NO. 22 DRILL



Exclusive Rights and Ownership of Buffalo Machines, Inc. formerly known as Buffalo Forge Machine Tool Division Any duplication, sale of this information without written permission by Owner, will constitute legal proceedings in accordance with CopyRight

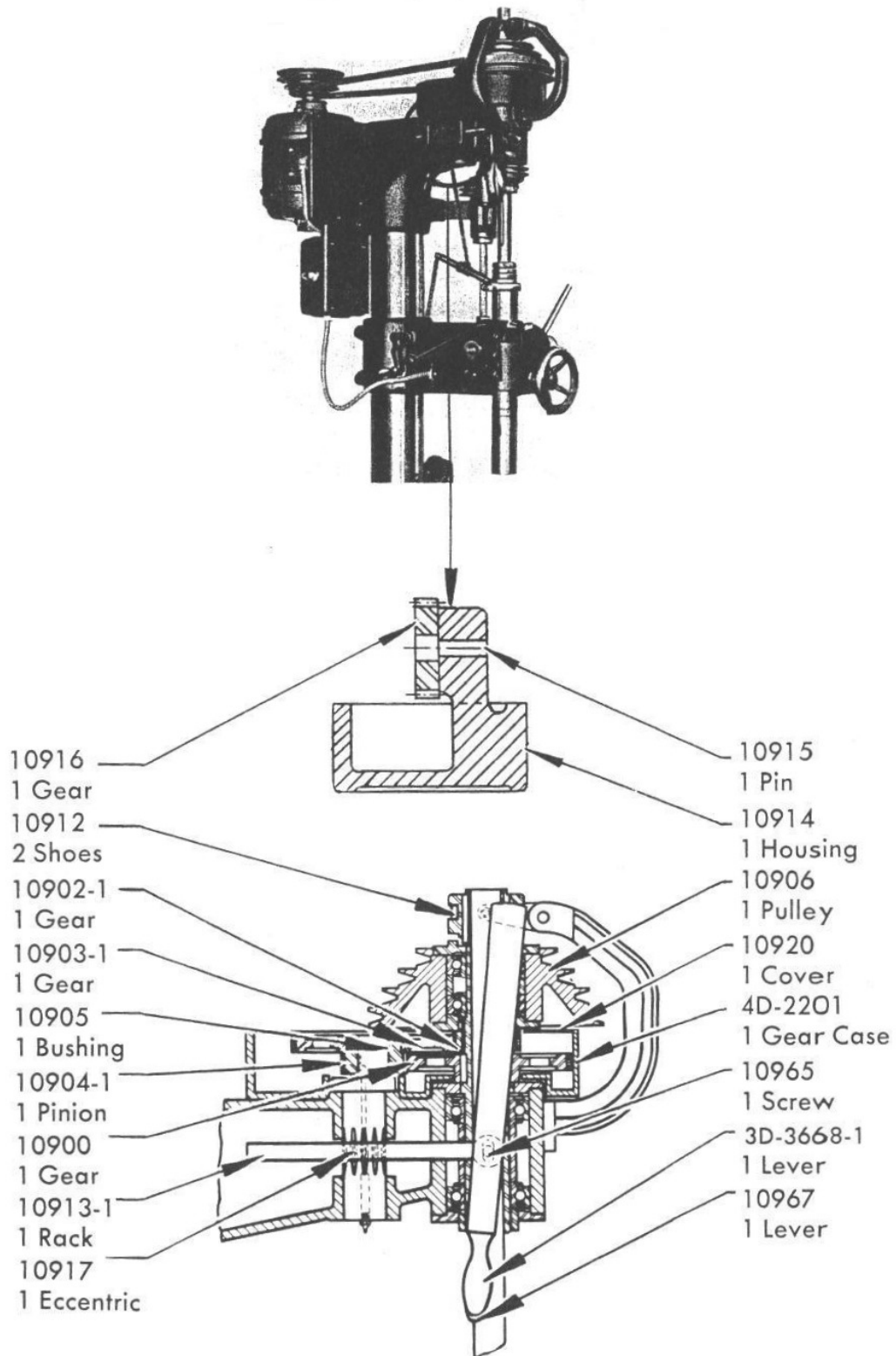
NOT FOR SALE OR DUPLICATION

REPAIR PARTS—NO. 22 DRILL



Exclusive Rights and Ownership of Buffalo Machines, Inc. formerly known as Buffalo Forge Machine Tool Division Any duplication, sale of this information without written permission by Owner, will constitute legal proceedings in accordance with CopyRight
NOT FOR SALE OR DUPLICATION

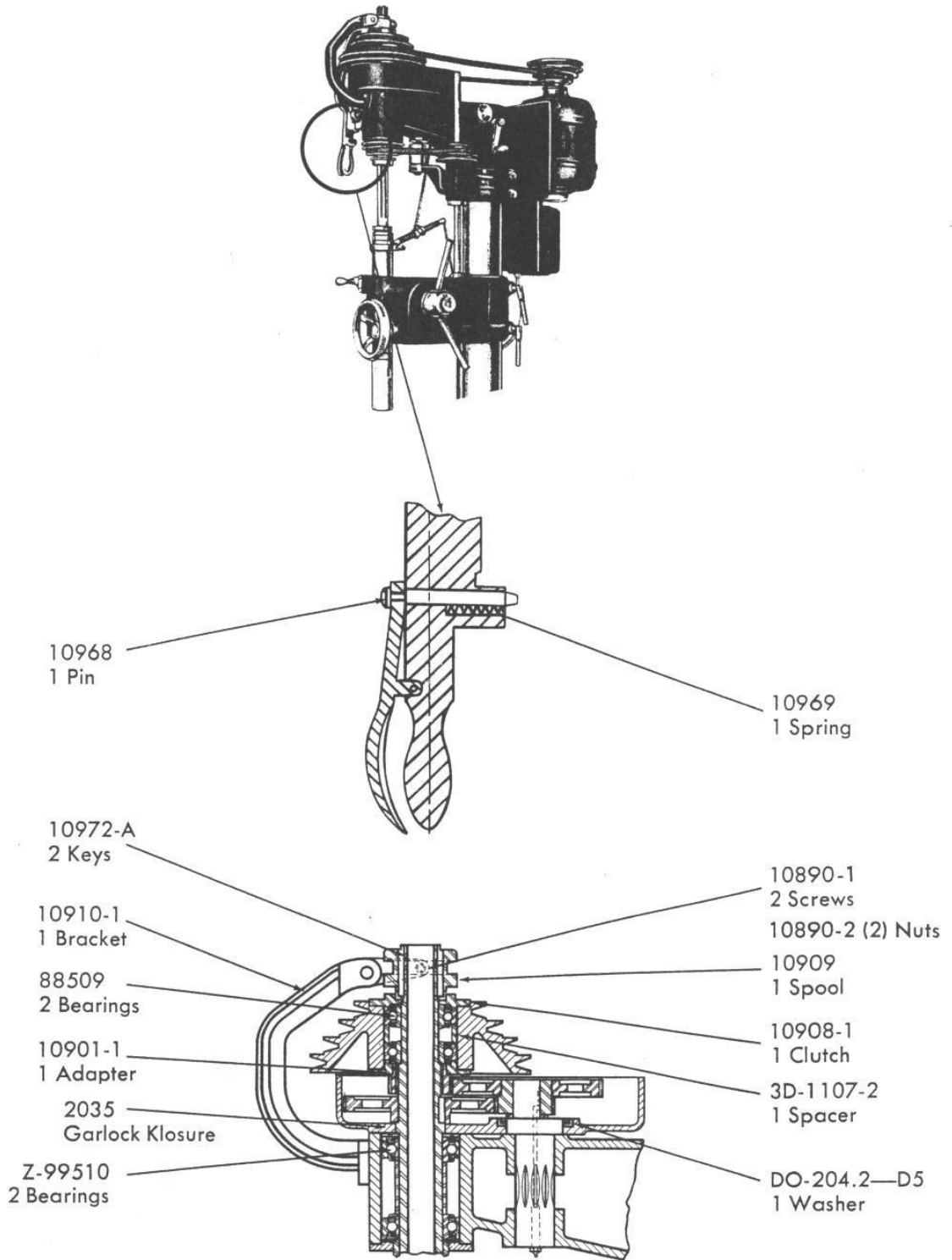
REPAIR PARTS—NO. 22 DRILL



Exclusive Rights and Ownership of Buffalo Machines, Inc, formerly known as Buffalo Forge Machine Tool Division Any duplication, sale of this information without written permission by Owner, will constitute legal proceedings in accordance with CopyRight

NOT FOR SALE OR DUPLICATION

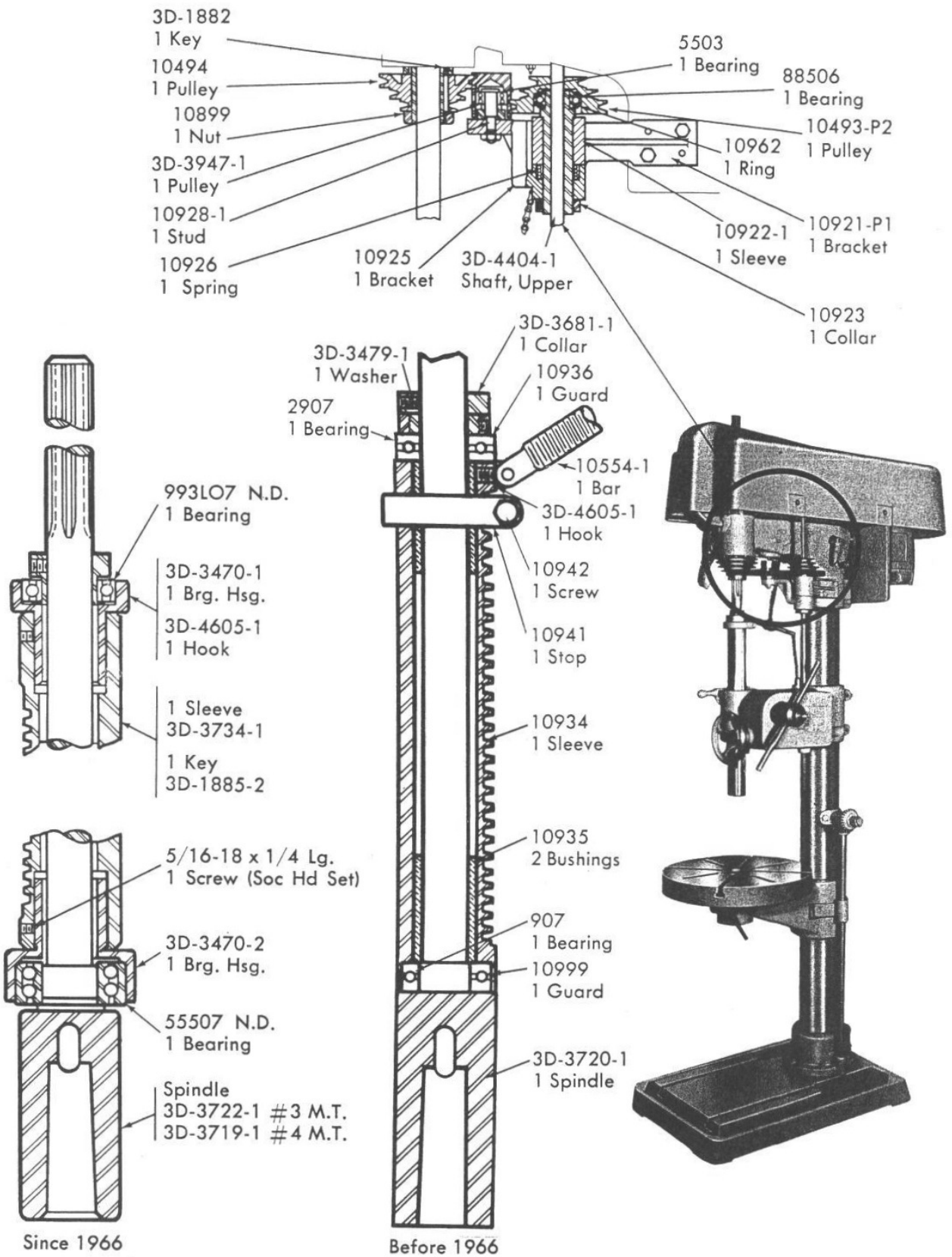
REPAIR PARTS—NO. 22 DRILL



Exclusive Rights and Ownership of Buffalo Machines, Inc, formerly known as Buffalo Forge Machine Tool Division Any duplication, sale of this information without written permission by Owner, will constitute legal proceedings in accordance with CopyRight

NOT FOR SALE OR DUPLICATION

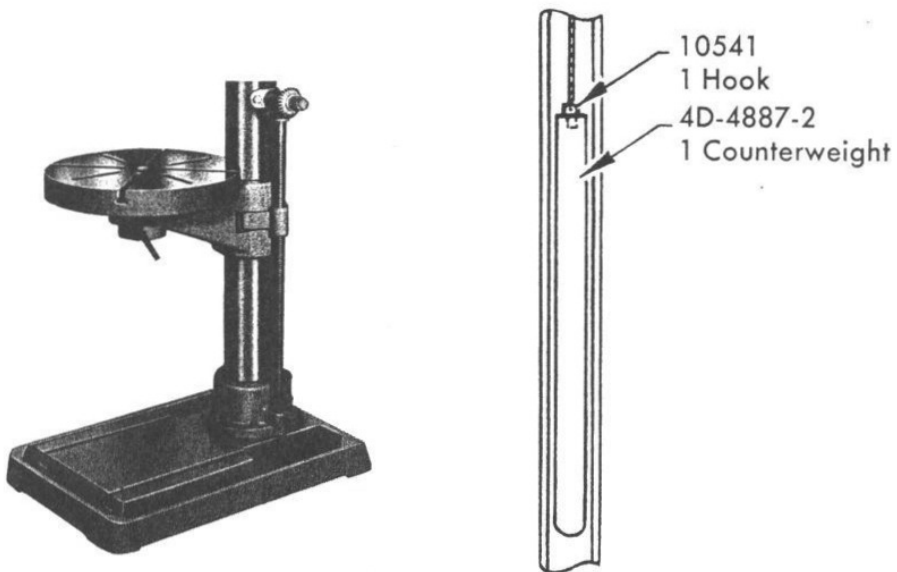
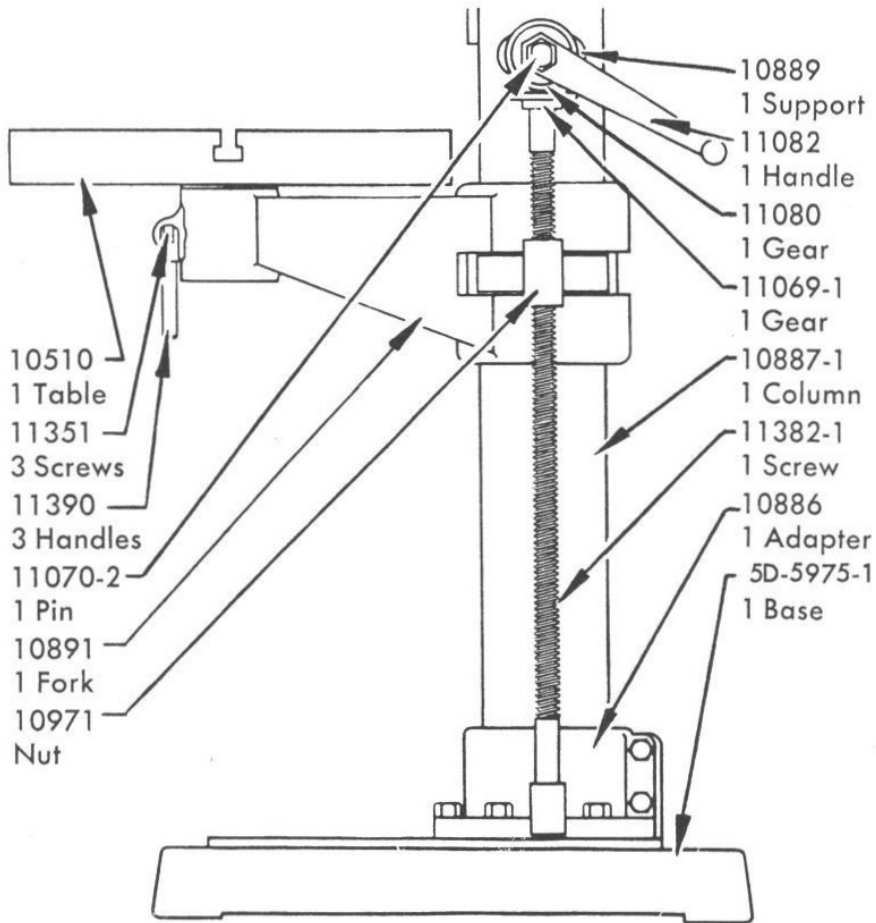
REPAIR PARTS—NO. 22 DRILL



Exclusive Rights and Ownership of Buffalo Machines, Inc, formerly known as Buffalo Forge Machine Tool Division Any duplication, sale of this information without written permission by Owner, will constitute legal proceedings in accordance with CopyRight

NOT FOR SALE OR DUPLICATION

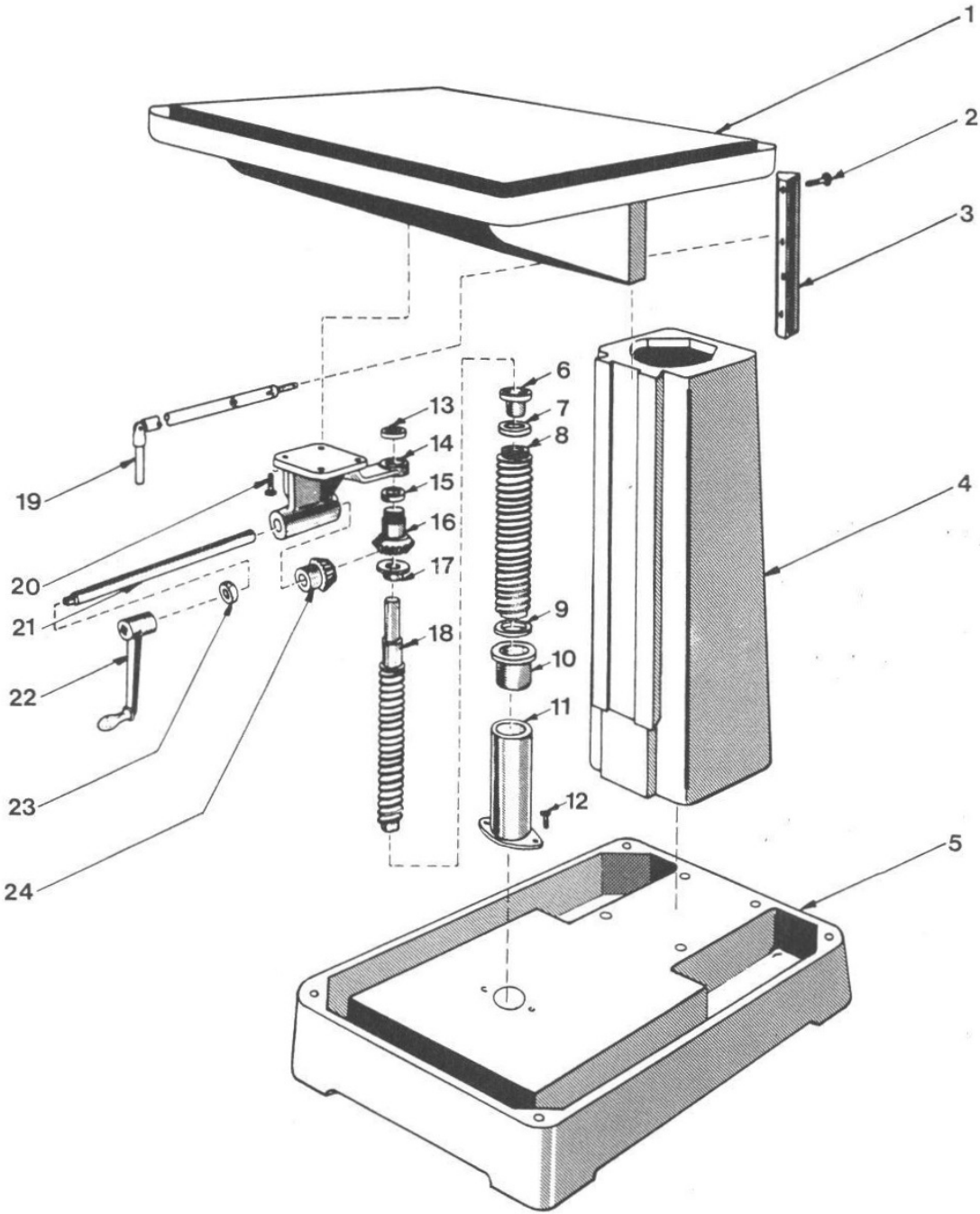
REPAIR PARTS—NO. 22 DRILL



Exclusive Rights and Ownership of Buffalo Machines, Inc, formerly known as Buffalo Forge Machine Tool Division Any duplication, sale of this information without written permission by Owner, will constitute legal proceedings in accordance with CopyRight

NOT FOR SALE OR DUPLICATION

REPAIR PARTS—NO. 22 DRILL
ILLUSTRATION OF PEDESTAL, BASE & TABLE PARTS



Exclusive Rights and Ownership of Buffalo Machines, Inc, formerly known as Buffalo Forge Machine Tool Division Any duplication, sale of this information without written permission by Owner, will constitute legal proceedings in accordance with CopyRight
NOT FOR SALE OR DUPLICATION