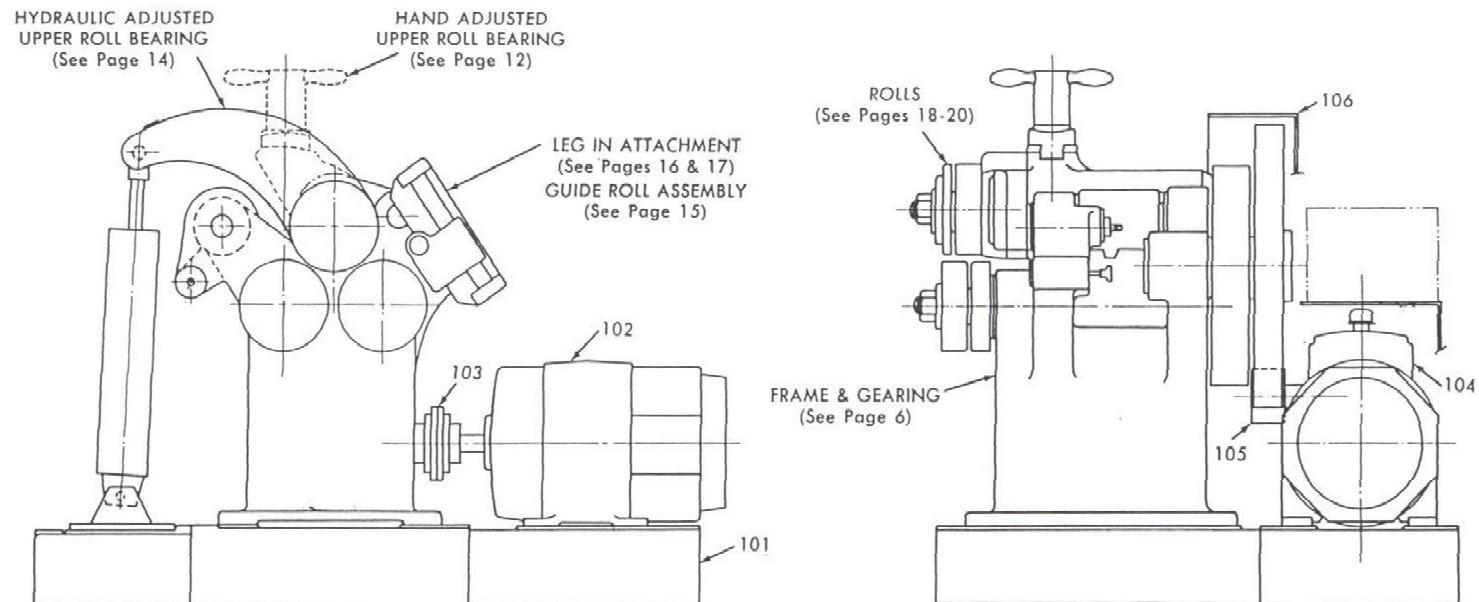


## Bending Roll Parts Break Down

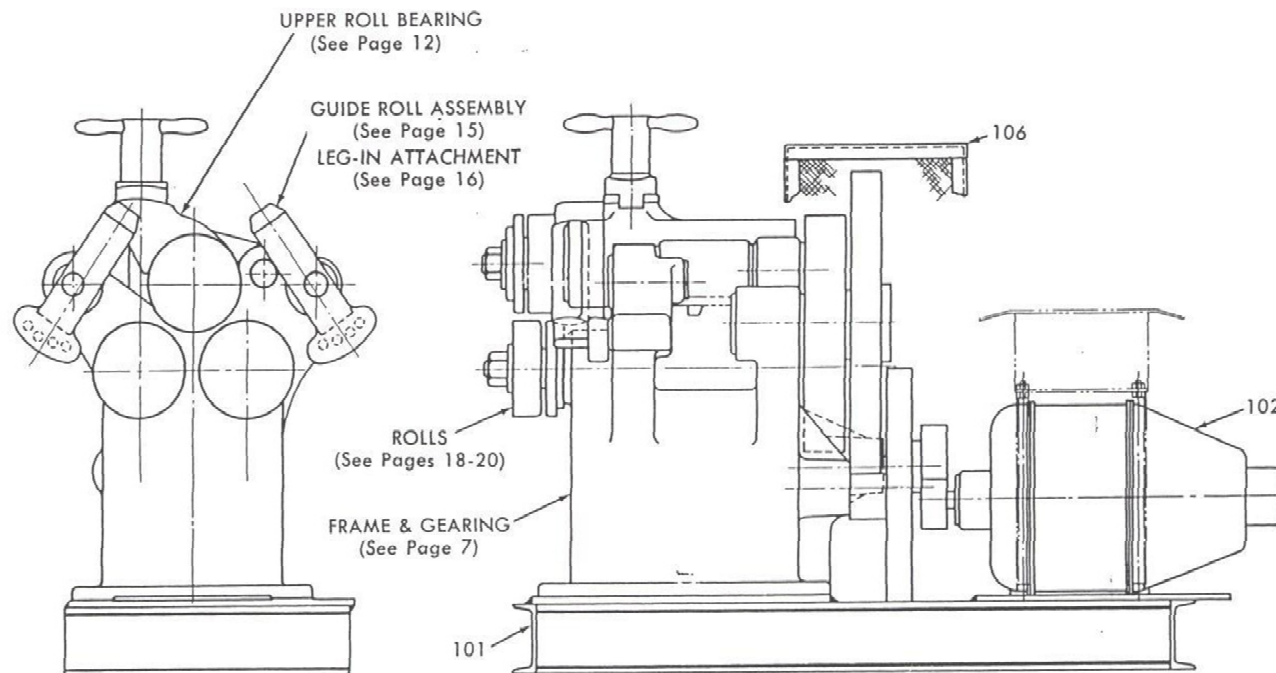


GENERAL ARRANGEMENT  
1/2 Vertical Bending Roll with Speed Reducer  
(After 1959)

*Exclusive Rights and Ownership of Buffalo Machines, Inc, formerly known as Buffalo Forge Machine Tool Division Any duplication, sale of this information without written permission by Owner, will constitute legal proceedings in accordance with the CopyRight*

**NOT FOR SALE OR DUPLICATION**

## Bending Roll Parts Break Down

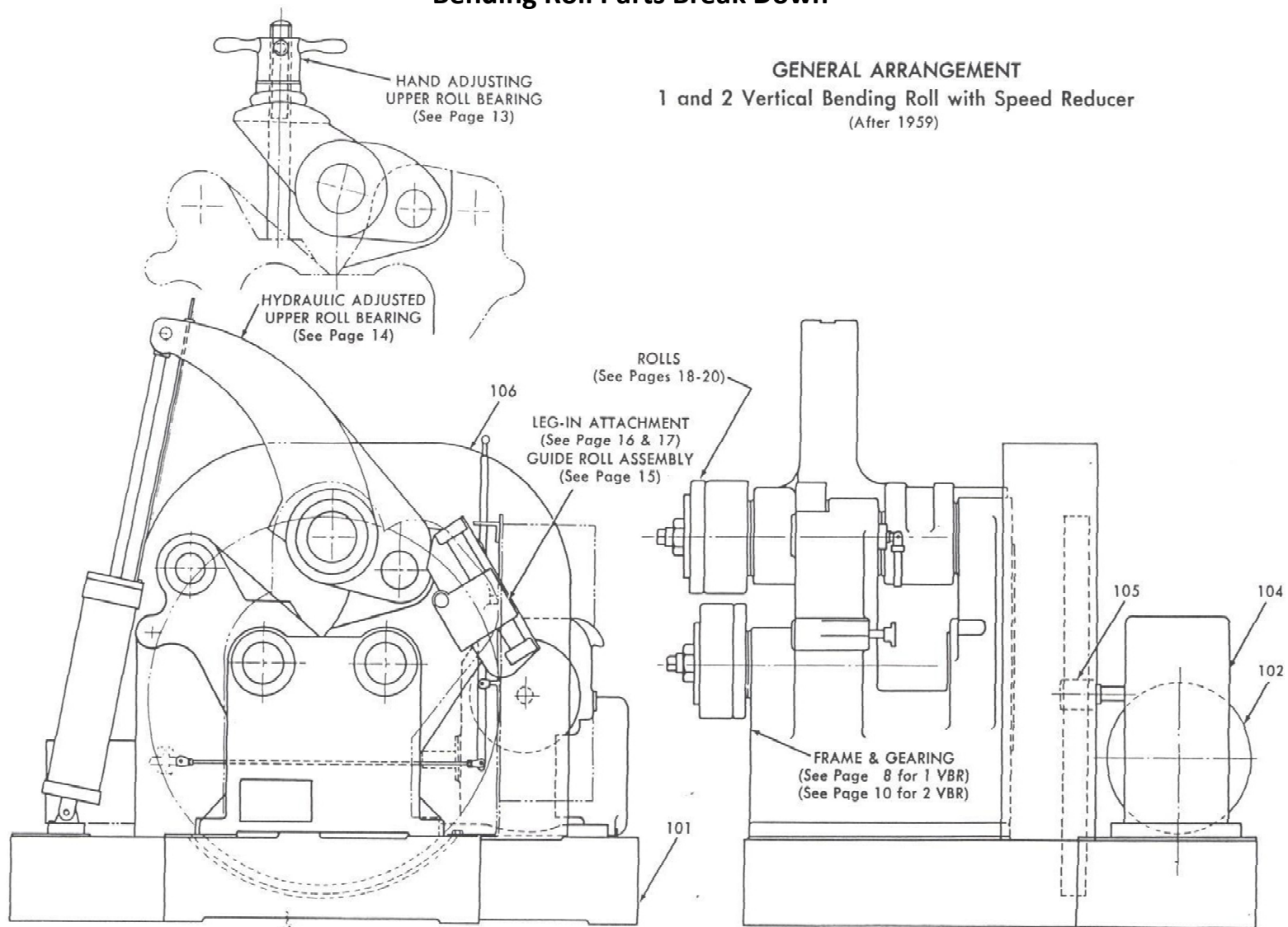


GENERAL ARRANGEMENT  
 $\frac{1}{2}$  Vertical Bending Roll with Open Gear Train  
(Before 1959)

*Exclusive Rights and Ownership of Buffalo Machines, Inc, formerly known as Buffalo Forge Machine Tool Division Any duplication, sale of this information without written permission by Owner, will constitute legal proceedings in accordance with the CopyRight*

**NOT FOR SALE OR DUPLICATION**

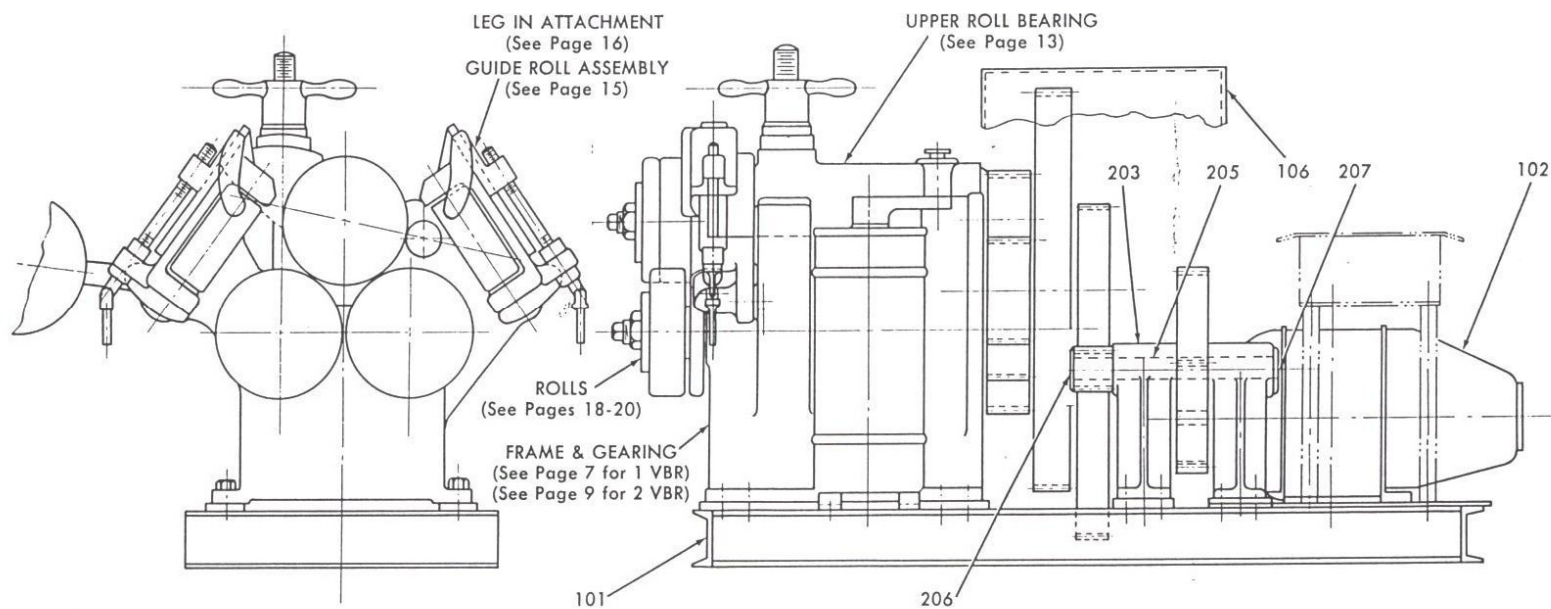
## Bending Roll Parts Break Down



*Exclusive Rights and Ownership of Buffalo Machines, Inc, formerly known as Buffalo Forge Machine Tool Division Any duplication, sale of this information without written permission by Owner, will constitute legal proceedings in accordance with the CopyRight*

**NOT FOR SALE OR DUPLICATION**

## Bending Roll Parts Break Down



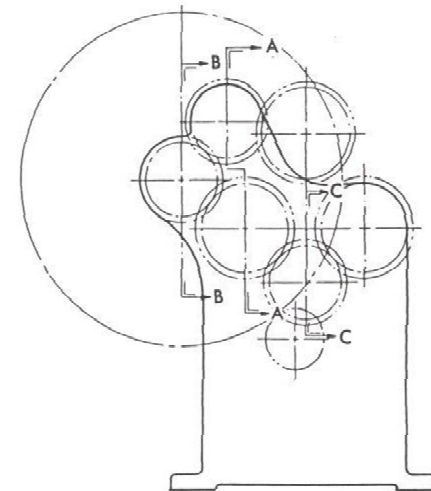
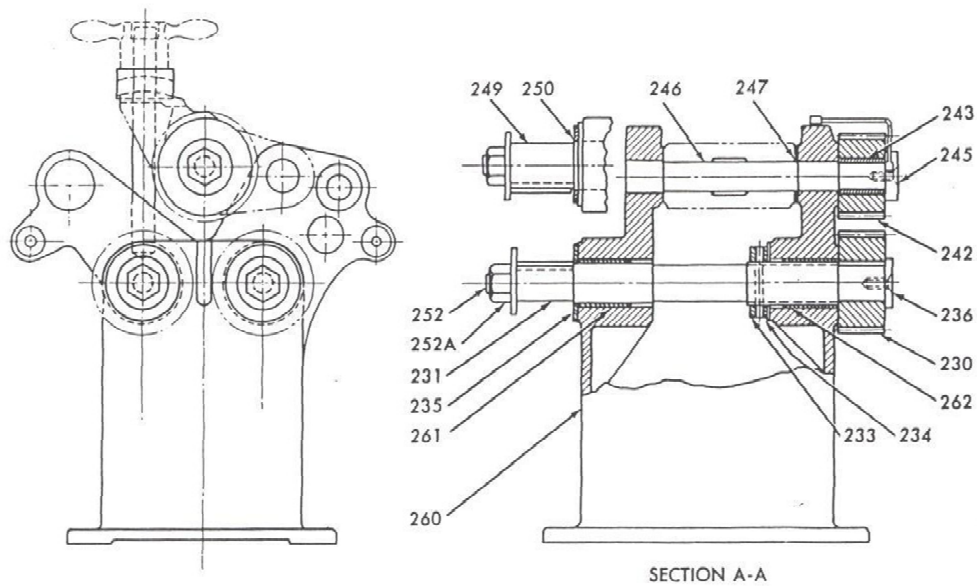
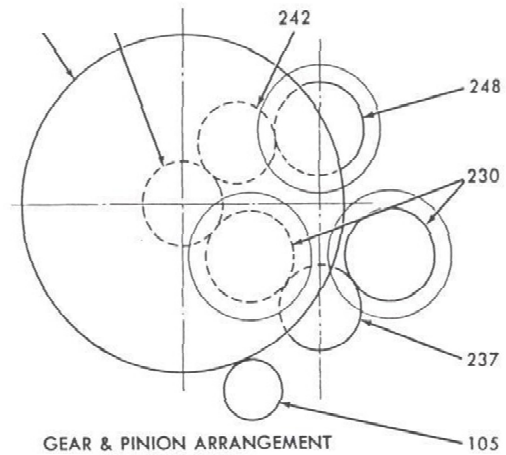
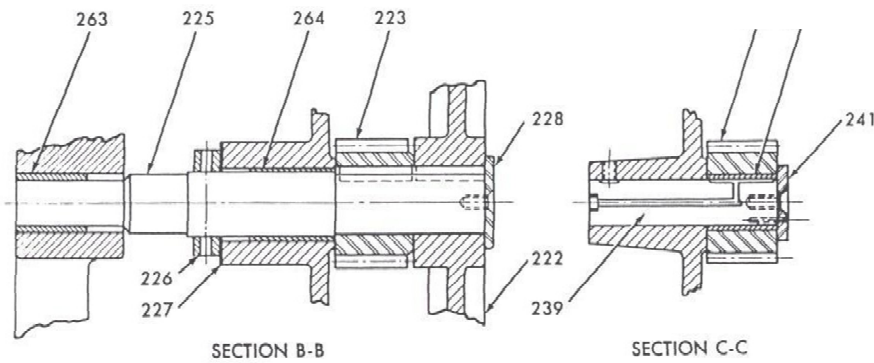
GENERAL ARRANGEMENT  
1 and 2 Vertical Bending Roll with Open Gear Train  
(Before 1959)

*Exclusive Rights and Ownership of Buffalo Machines, Inc, formerly known as Buffalo Forge Machine Tool Division Any duplication, sale of this information without written permission by Owner, will constitute legal proceedings in accordance with the CopyRight*

**NOT FOR SALE OR DUPLICATION**



## Bending Roll Parts Break Down

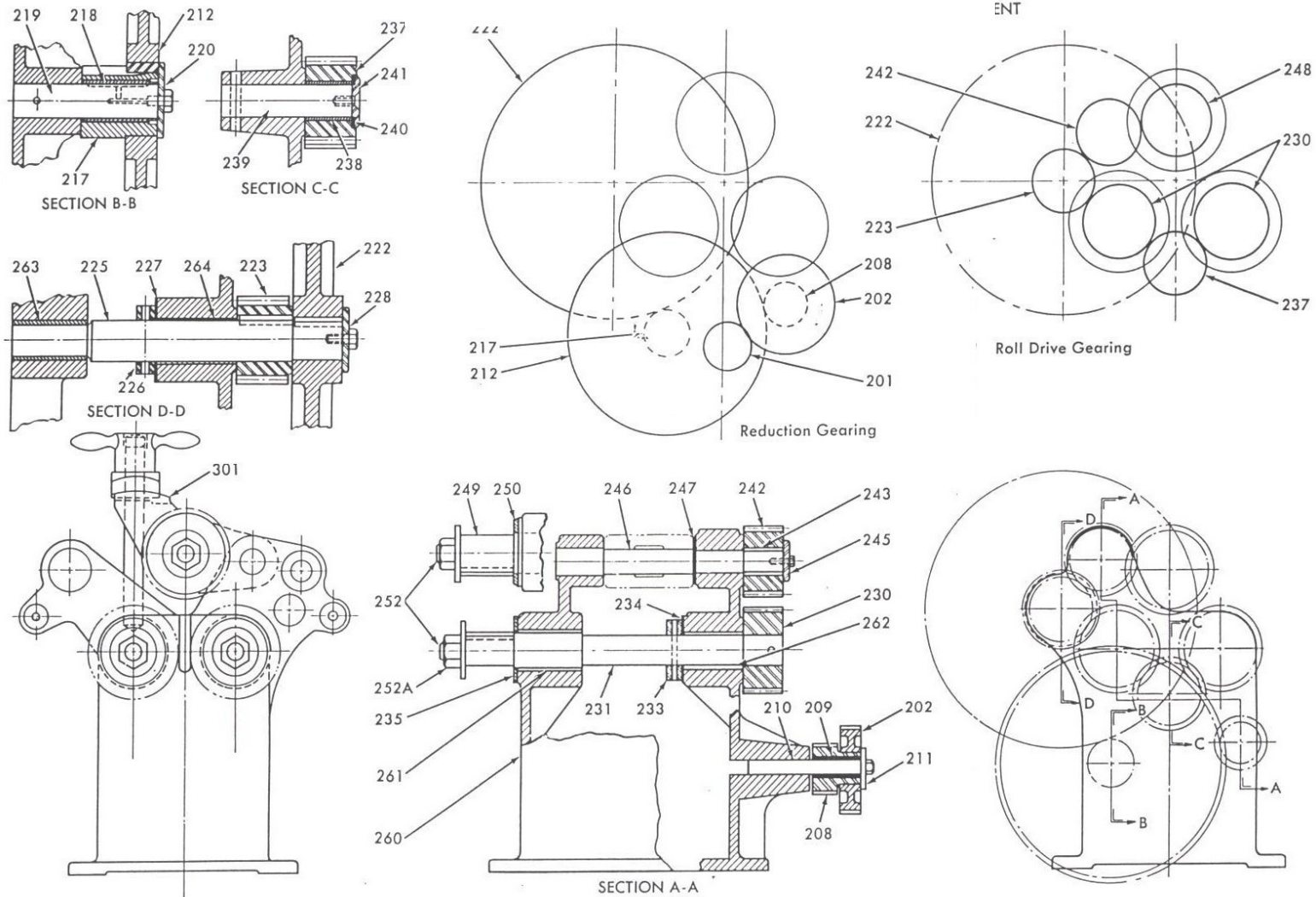


FRAME AND GEARING ASSEMBLY  
 $\frac{1}{2}$  Vertical Bending Roll with Speed Reducer  
 (After June 1959)

**Exclusive Rights and Ownership of Buffalo Machines, Inc, formerly known as Buffalo Forge Machine Tool Division Any duplication, sale of this information without written permission by Owner, will constitute legal proceedings in accordance with the CopyRight**

**NOT FOR SALE OR DUPLICATION**

## Bending Roll Parts Break Down

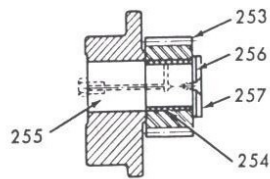


FRAME AND GEARING ASSEMBLY  
 $\frac{1}{2}$  Vertical Bending Roll with Open Gear Train  
 (Before June 1959)

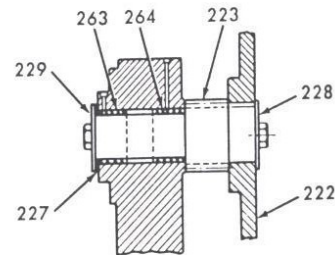
**Exclusive Rights and Ownership of Buffalo Machines, Inc, formerly known as Buffalo Forge Machine Tool Division Any duplication, sale of this information without written permission by Owner, will constitute legal proceedings in accordance with the CopyRight**

**NOT FOR SALE OR DUPLICATION**

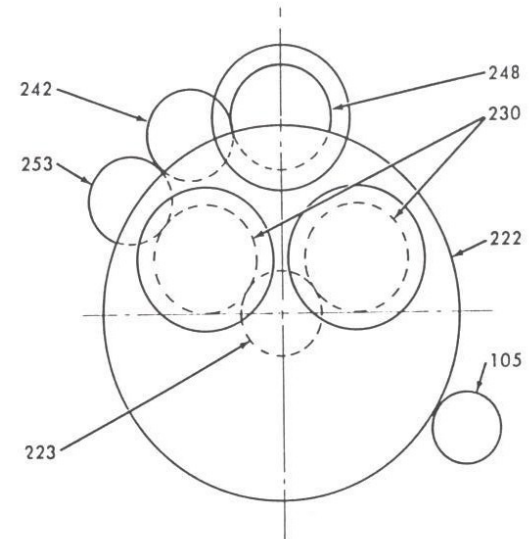
## Bending Roll Parts Break Down



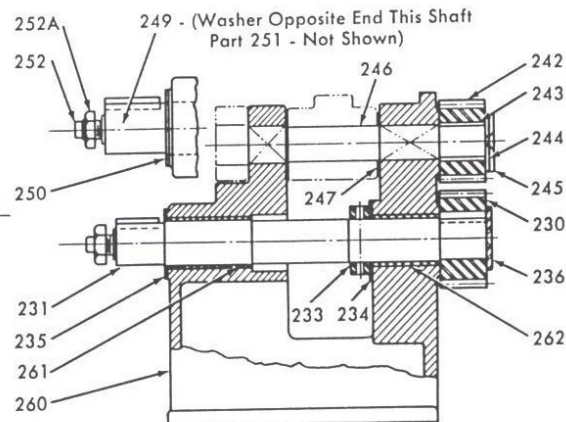
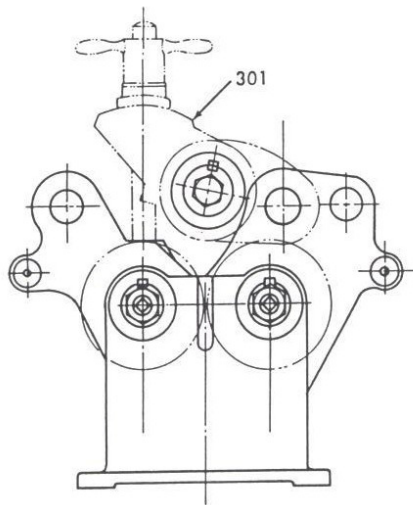
SECTION B-B



SECTION C-C

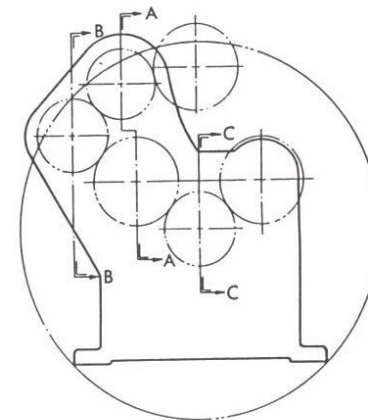


GEAR AND PINION ARRANGEMENT



SECTION A-A

FRAME AND GEARING ASSEMBLY  
1 Vertical Bending Roll with Speed Reducer  
(After March 1959)

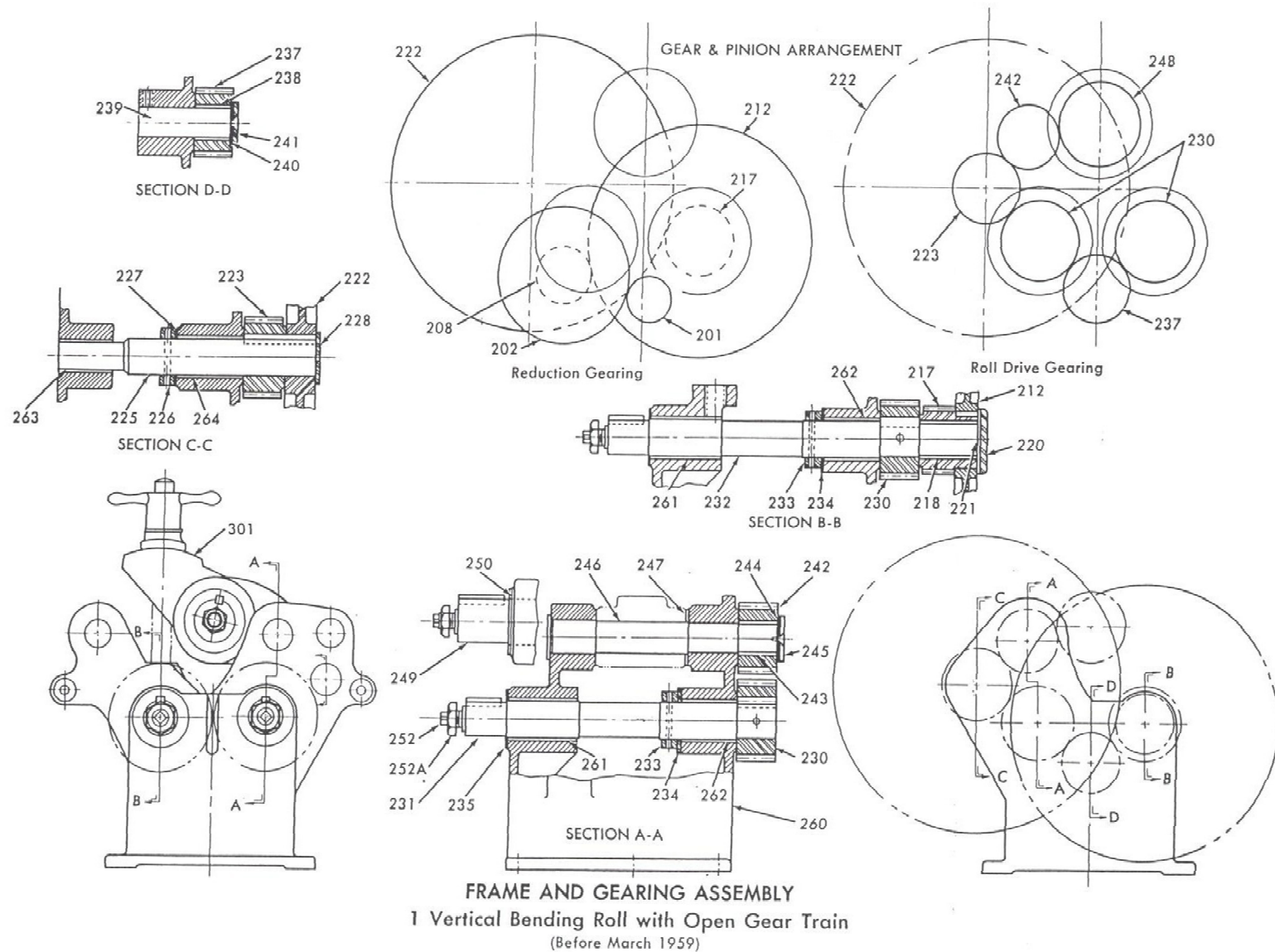


**Exclusive Rights and Ownership of Buffalo Machines, Inc, formerly known as Buffalo Forge Machine Tool Division Any duplication, sale of this information without written permission by Owner, will constitute legal proceedings in accordance with the CopyRight**

**NOT FOR SALE OR DUPLICATION**



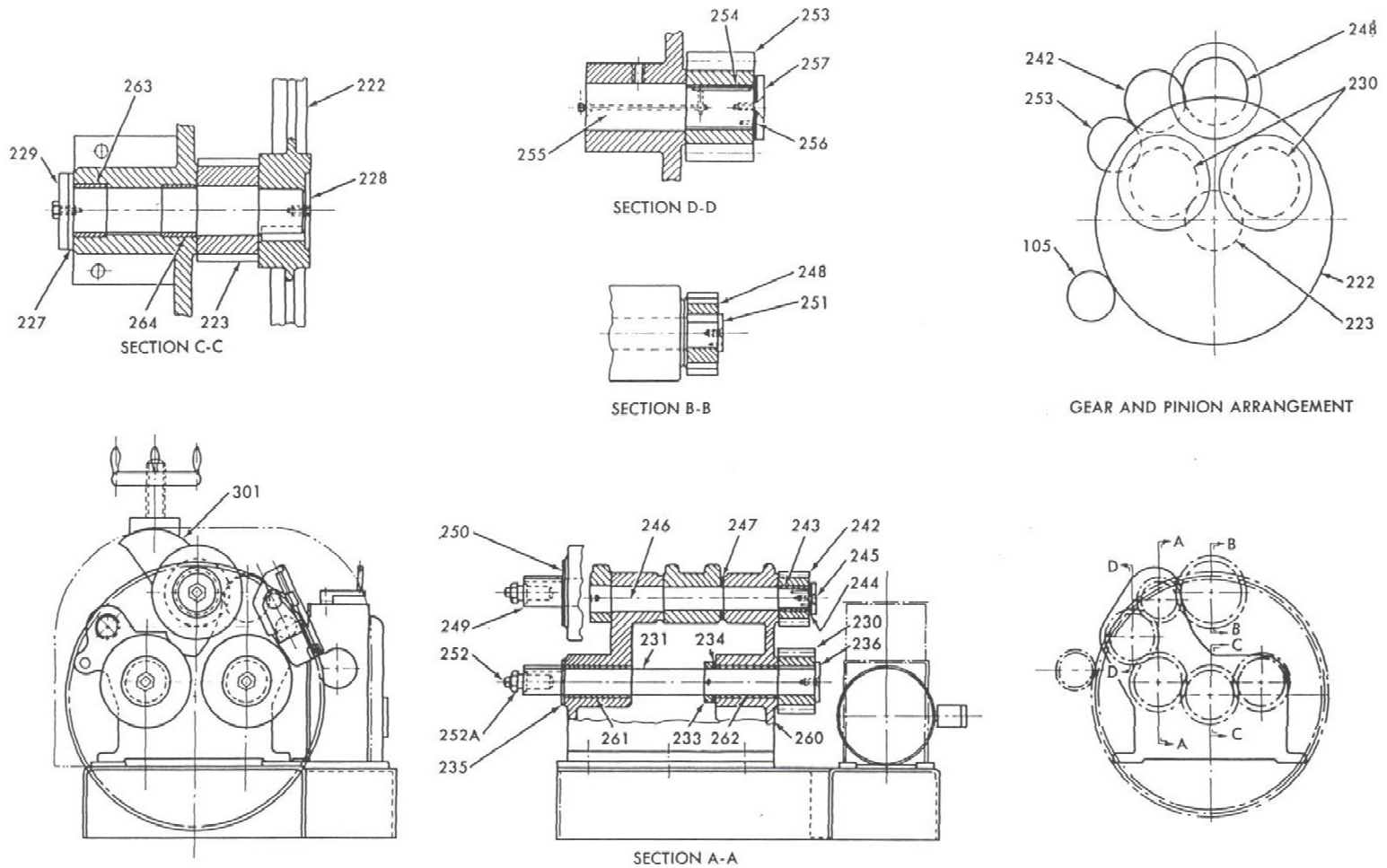
## Bending Roll Parts Break Down



Exclusive Rights and Ownership of Buffalo Machines, Inc, formerly known as Buffalo Forge Machine Tool Division Any duplication, sale of this information without written permission by Owner, will constitute legal proceedings in accordance with the CopyRight

**NOT FOR SALE OR DUPLICATION**

## Bending Roll Parts Break Down



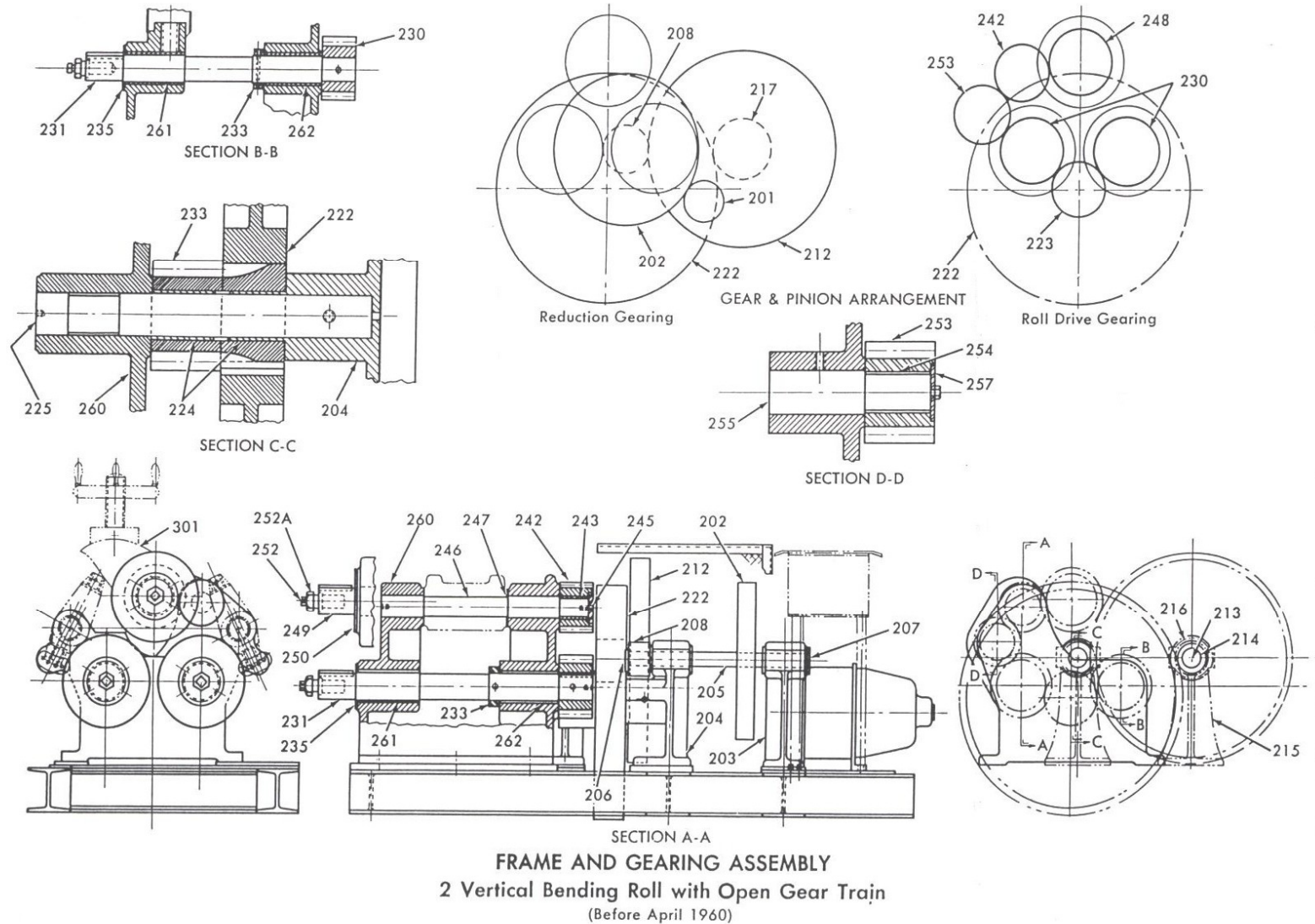
**FRAME AND GEARING ASSEMBLY**  
**2 Vertical Bending Roll with Speed Reducer**  
 (After April 1960)

*Exclusive Rights and Ownership of Buffalo Machines, Inc, formerly known as Buffalo Forge Machine Tool Division Any duplication, sale of this information without written permission by Owner, will constitute legal proceedings in accordance with the CopyRight*

**NOT FOR SALE OR DUPLICATION**



## Bending Roll Parts Break Down

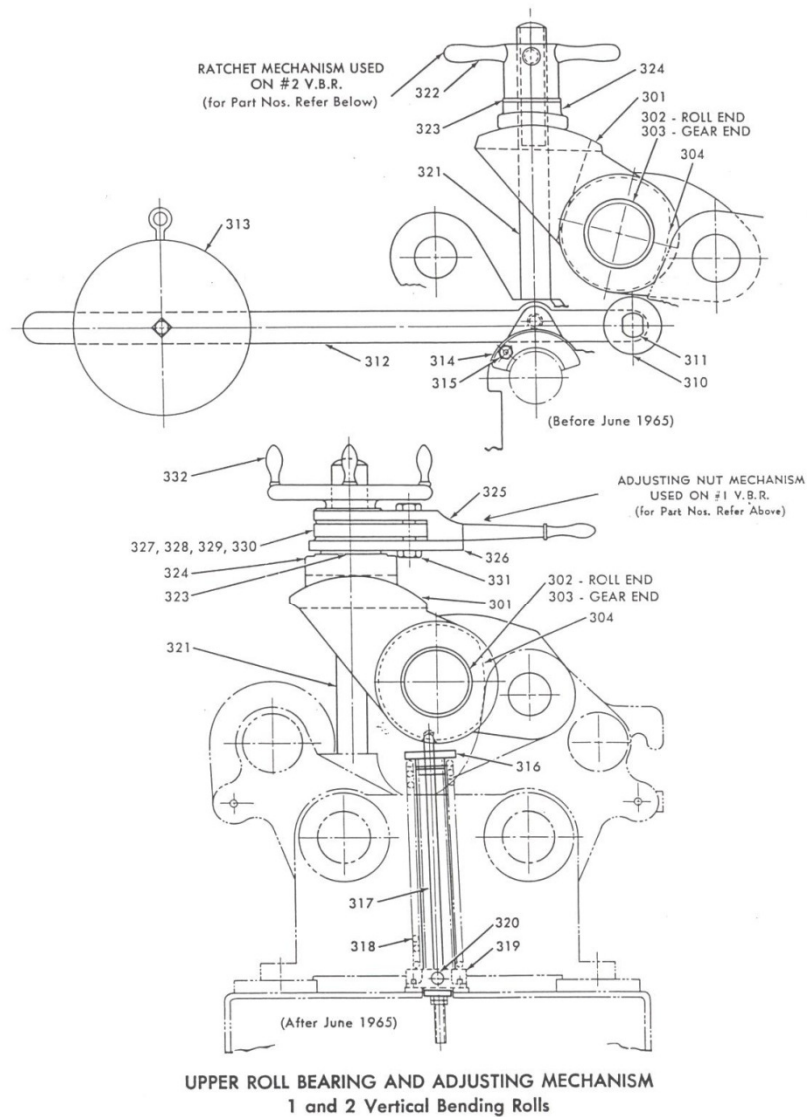


*Exclusive Rights and Ownership of Buffalo Machines, Inc, formerly known as Buffalo Forge Machine Tool Division Any duplication, sale of this information without written permission by Owner, will constitute legal proceedings in accordance with the CopyRight*

**NOT FOR SALE OR DUPLICATION**



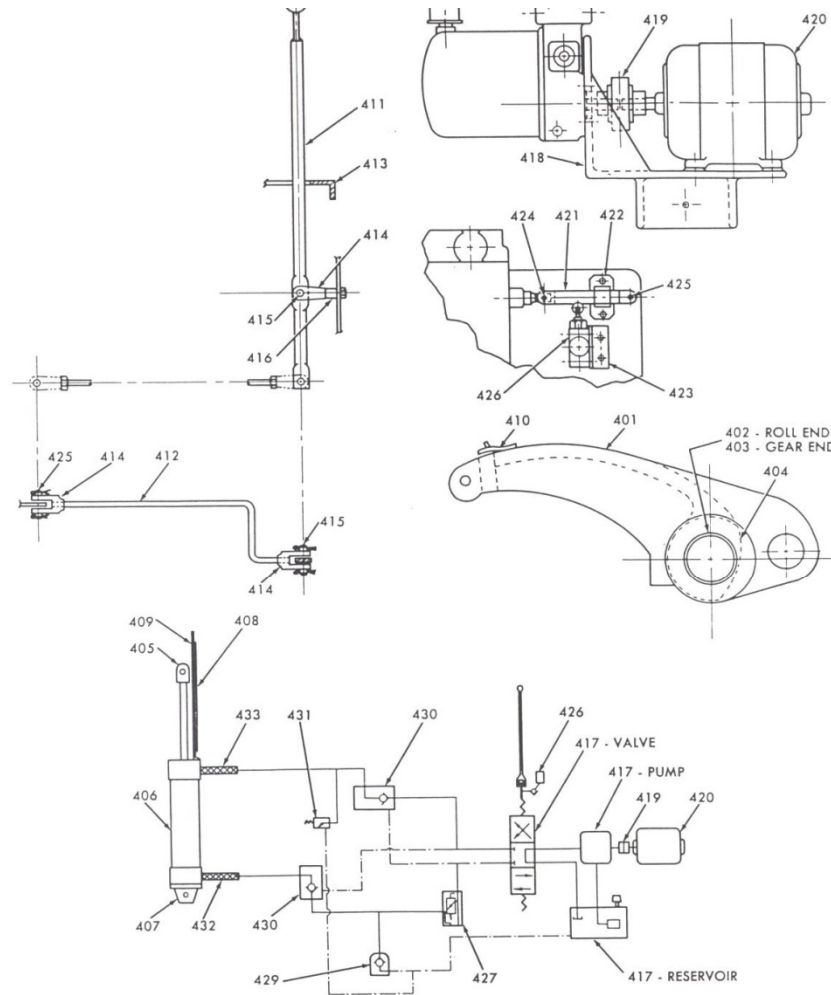
## Bending Roll Parts Break Down



*Exclusive Rights and Ownership of Buffalo Machines, Inc, formerly known as Buffalo Forge Machine Tool Division Any duplication, sale of this information without written permission by Owner, will constitute legal proceedings in accordance with the CopyRight*

**NOT FOR SALE OR DUPLICATION**

## Bending Roll Parts Break Down

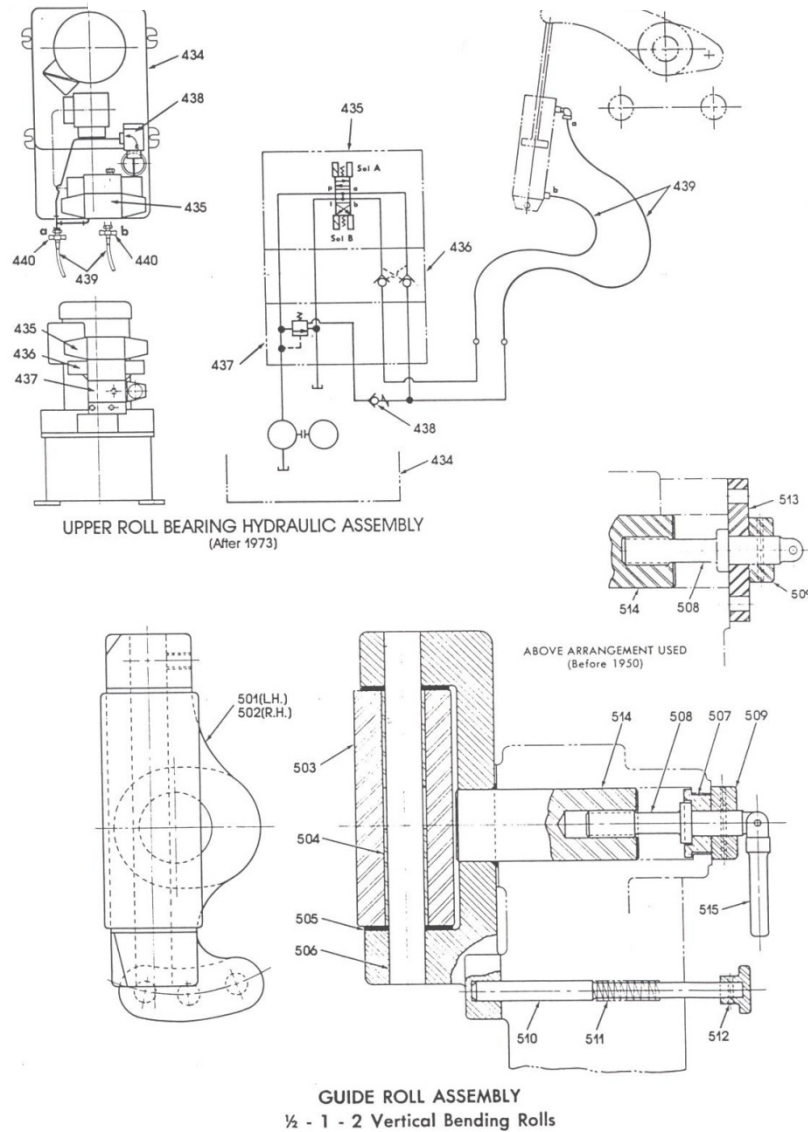


UPPER ROLL BEARING AND HYDRAULIC ADJUSTING MECHANISM  
 $\frac{1}{2}$  - 1 - 2 Vertical Bending Rolls  
 (Before 1974)

*Exclusive Rights and Ownership of Buffalo Machines, Inc, formerly known as Buffalo Forge Machine Tool Division Any duplication, sale of this information without written permission by Owner, will constitute legal proceedings in accordance with the CopyRight*

**NOT FOR SALE OR DUPLICATION**

## Bending Roll Parts Break Down

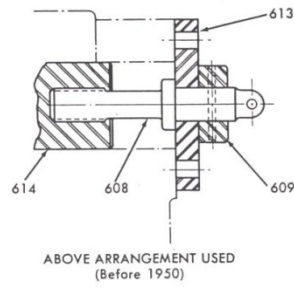


**Exclusive Rights and Ownership of Buffalo Machines, Inc, formerly known as Buffalo Forge Machine Tool Division Any duplication, sale of this information without written permission by Owner, will constitute legal proceedings in accordance with the CopyRight**

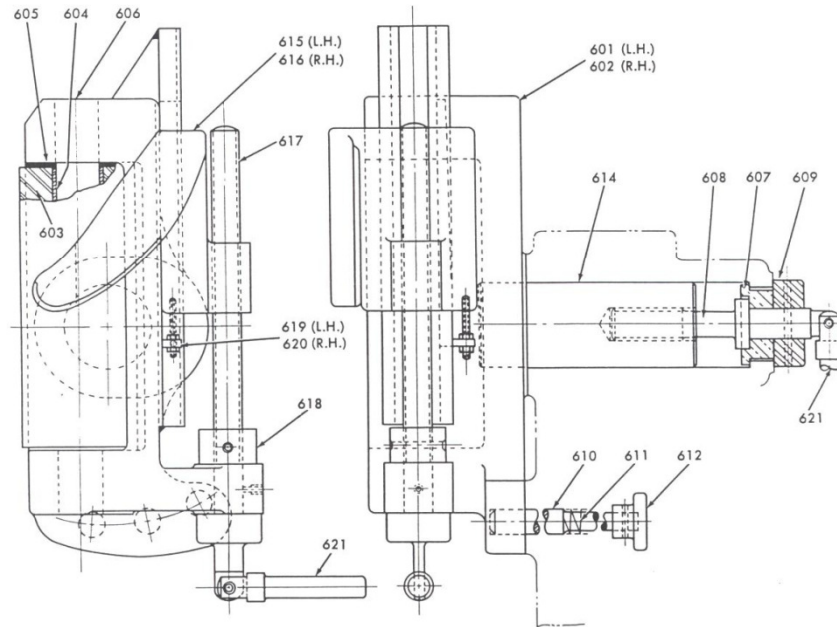
**NOT FOR SALE OR DUPLICATION**



## Bending Roll Parts Break Down



ABOVE ARRANGEMENT USED  
(Before 1950)

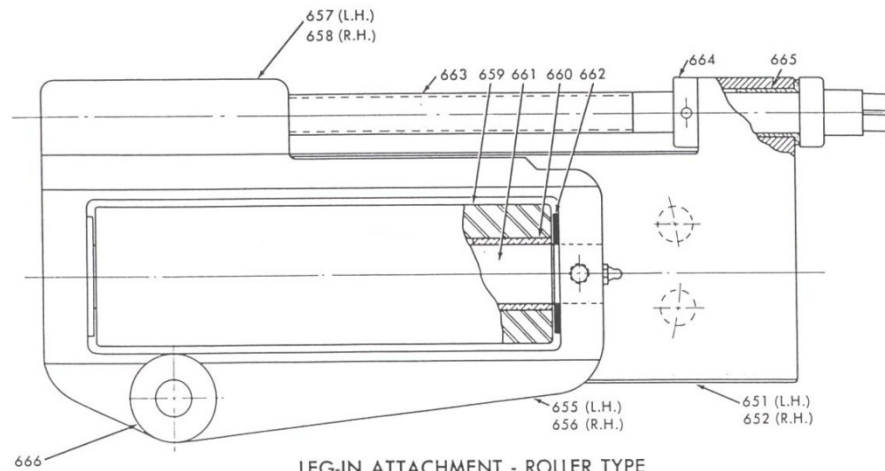


LEG-IN ATTACHMENT - FINGER TYPE  
½ - 1 - 2 Vertical Bending Rolls

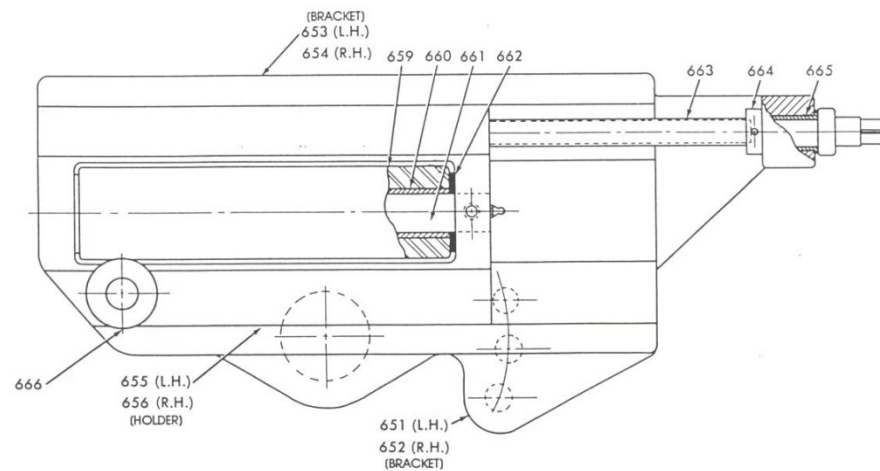
*Exclusive Rights and Ownership of Buffalo Machines, Inc, formerly known as Buffalo Forge Machine Tool Division Any duplication, sale of this information without written permission by Owner, will constitute legal proceedings in accordance with the CopyRight*

**NOT FOR SALE OR DUPLICATION**

## Bending Roll Parts Break Down



LEG-IN ATTACHMENT - ROLLER TYPE  
 $\frac{1}{2}$  - 1 Vertical Bending Rolls  
 (After September 1965)

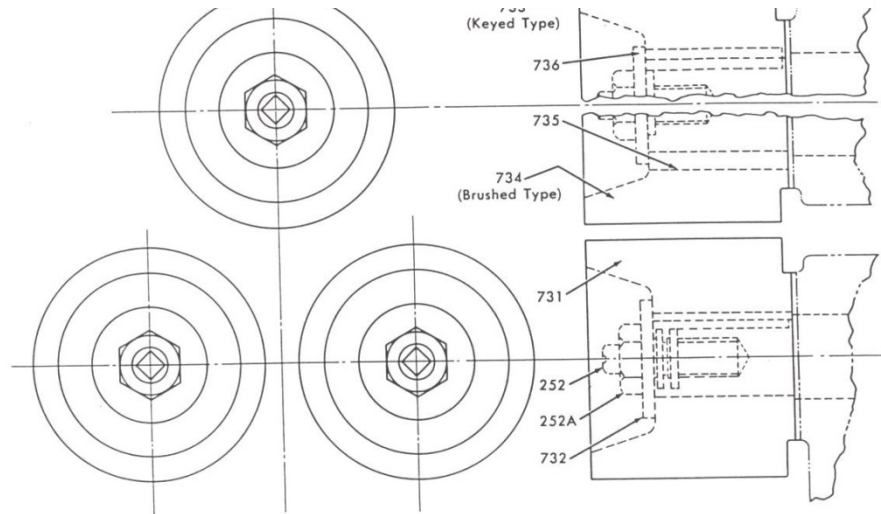


LEG-IN ATTACHMENT - ROLLER TYPE  
 For 2 Vertical Bending Roll  
 (After September 1965)

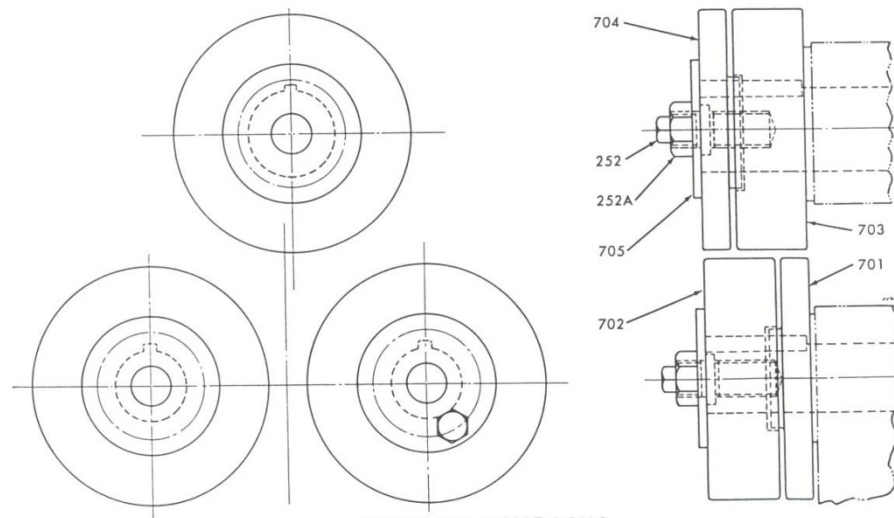
*Exclusive Rights and Ownership of Buffalo Machines, Inc, formerly known as Buffalo Forge Machine Tool Division Any duplication, sale of this information without written permission by Owner, will constitute legal proceedings in accordance with the CopyRight*

**NOT FOR SALE OR DUPLICATION**

## Bending Roll Parts Break Down



STANDARD FLAT ON FLAT ROLLS  
 $\frac{1}{2}$  - 1 - 2 Vertical Bending Rolls

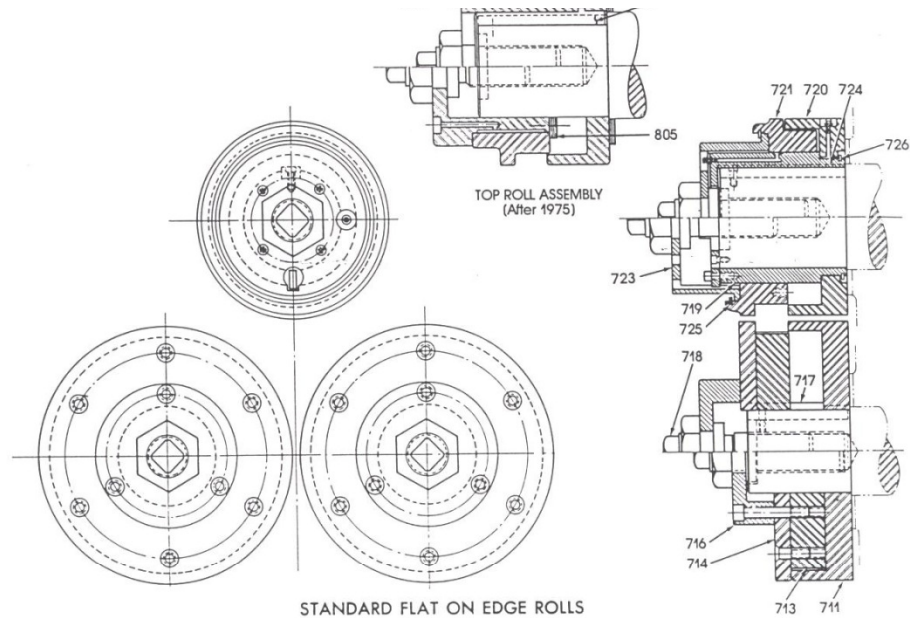


STANDARD ANGLE ROLLS  
 $\frac{1}{2}$  - 1 - 2 Vertical Bending Rolls

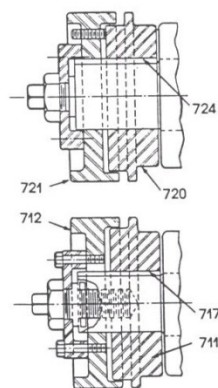
**Exclusive Rights and Ownership of Buffalo Machines, Inc, formerly known as Buffalo Forge Machine Tool Division Any duplication, sale of this information without written permission by Owner, will constitute legal proceedings in accordance with the CopyRight**

**NOT FOR SALE OR DUPLICATION**

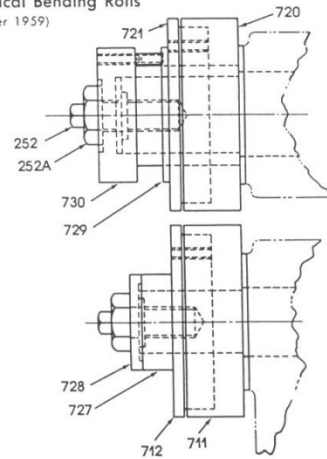
## Bending Roll Parts Break Down



STANDARD FLAT ON EDGE ROLLS  
1/2 - 1 - 2 Vertical Bending Rolls  
(After 1959)



FLAT ON EDGE ROLLS  
2 Vertical Bending Rolls  
(Before 1957)

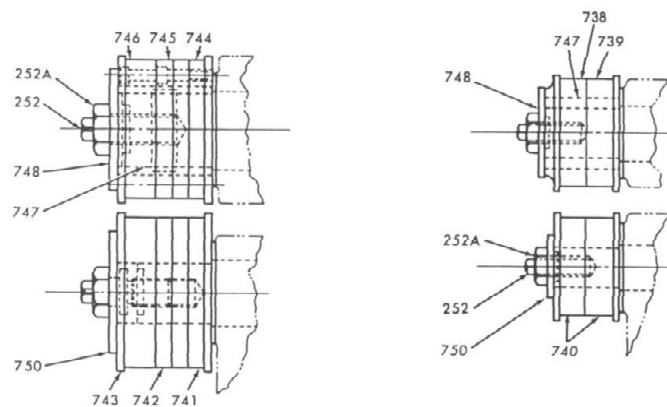
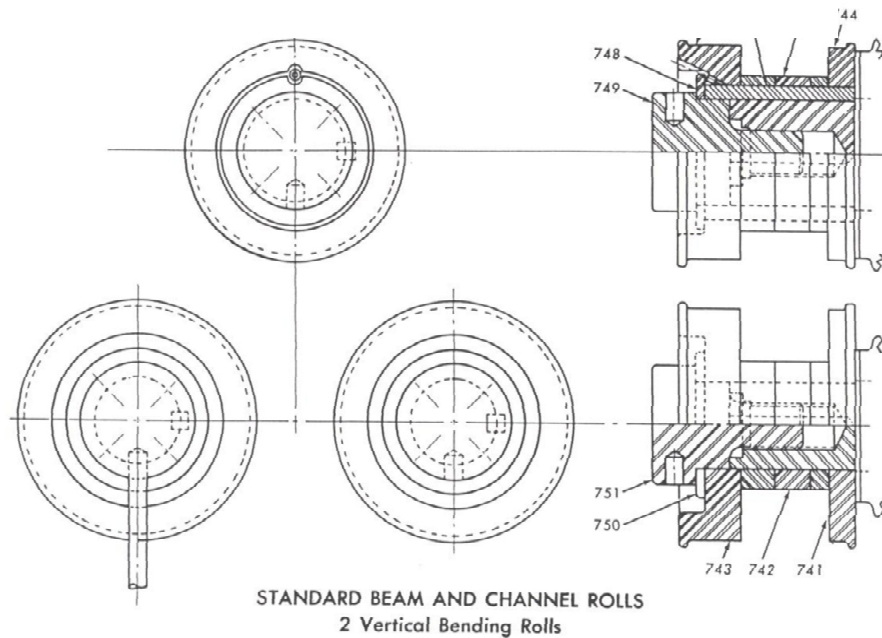


FLAT ON EDGE ROLLS  
1/2 and 1 Vertical Bending Rolls  
(Before 1958)

**Exclusive Rights and Ownership of Buffalo Machines, Inc, formerly known as Buffalo Forge Machine Tool Division Any duplication, sale of this information without written permission by Owner, will constitute legal proceedings in accordance with the CopyRight**

**NOT FOR SALE OR DUPLICATION**

## Bending Roll Parts Break Down



**Exclusive Rights and Ownership of Buffalo Machines, Inc, formerly known as Buffalo Forge Machine Tool Division Any duplication, sale of this information without written permission by Owner, will constitute legal proceedings in accordance with the CopyRight**

**NOT FOR SALE OR DUPLICATION**