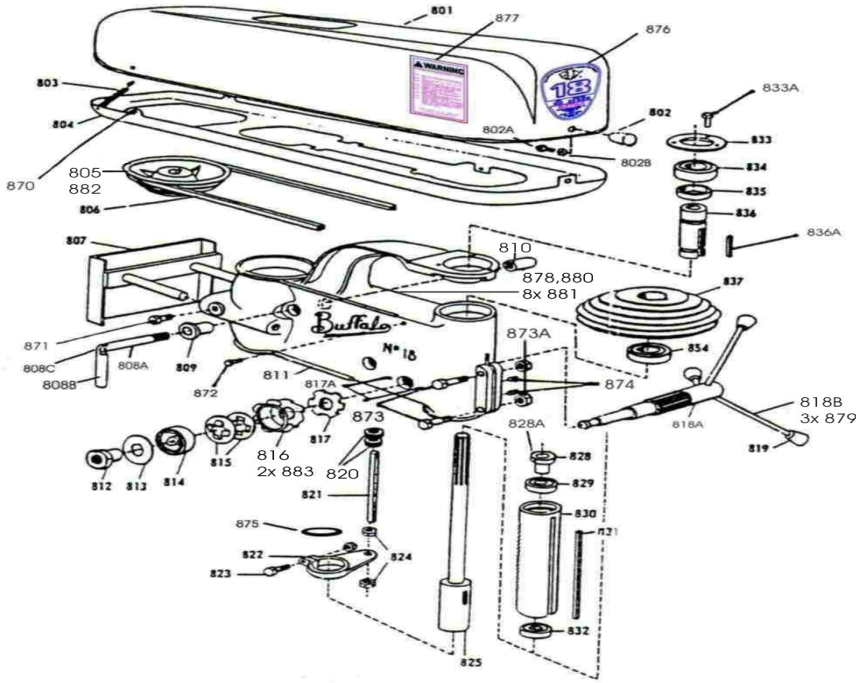


HEAD ASSEMBLY #18

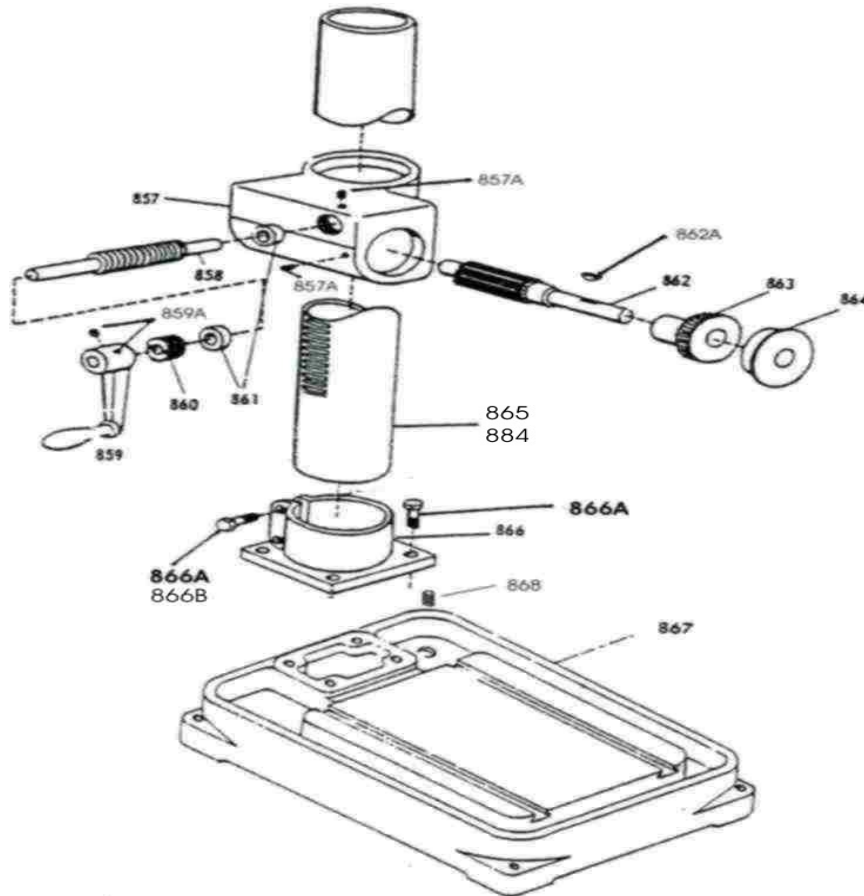


Index	Part	Number	Index	Part	Number
802A	Rd. Hd. Machine Screw	301-34-204	825	No. 3 Morse Taper Spindle	5D-4835-10
802B	Internal Tooth Lock Washer	301-89-051	828	Spindle Bearing Collar	10210-1
803	Springs for Upper Guard	3D-3351-1	828A	Soc. Hd. Set Screw	301-68-049
804	Belt Guard, Lower	5D-4824-1	829	Bearing	204-11-401
805	Motor Pulley- Specify Bore	402964	830	Feed Sleeve	10209-1
806	V-Belt	215-11-158	831	Key	D0-320.1-97
807	Motor Bracket Assembly	4D-6208-2	832	Bearing	204-11-361
808	Head Clamp Screw	5D-4015-1	833	Bearing Retainer	252291
(808A)	Screw	303457-3	833A	Hex Hd. Cap Screw	301-05-1124
(808B)	Handle	303456	834	Bearing	204-11-392
(808C)	Pin	301-54-173	835	Spacer	300325
809	Plain Sleeve	303434-1	836	Spindle Pulley Sleeve	10208-1
810	Tapped Sleeve	303434-2	836A	Key	D0-320.2-23
811	Head Frame	500941	837	Spindle Pulley	402965-1
812	Return Spring Collar Feed Pinion	303528	870	Hinge Pin	3D-3346-2
813	Return Spring Washer Cover	303527	871	Thumbscrew	301-83-062
814	Return Spring	11965-1	872	Hex Hd. Cap Screw	301-05-478
815	Spring Disc	3D-3209-1	873	Soc Hd. Cap Screw	301-06-113
816	Return Spring Retainer	401613	873A	Hex Nut	301-42-071
817	Clutch Plate	303526	874	Soc. Hd. Screw Set	301-68-1024
817A	Ft. Hd. Machine Screw	301-32-185	875	Damping washer	303494-2
818	Feed Pinion & Handle Assembly	C5-6787-1	876	#18 Decal	4D-6004-2
(818A)	Feed Pinion	303529	877	Warning Decal	B5-4556-2
(818B)	Handle	303530	878	General Nameplate	B5-6760-1
819	Knob for Feed Pinion	300331	879	Setscrew	301-68-088
820	Adjusting Nuts	303513	880	Lubrication Chart	B5-6850-1
821	Depth Stop Bar	303531	881	Drive Screw	301-13-037
822	Depth Stop Collar	300321	882	Setscrew	301-68-040
823A	Hex Hd. Cap Screw	301-05-417	883	Mach. Screw	301-32-1731

*Exclusive Rights and Ownership of Buffalo Machines, Inc, formerly known as Buffalo Forge Machine Tool Division
Any duplication, sale of this information without written permission by Owner, will constitute legal proceedings in accordance with the Copyright laws.*

NOT FOR SALE OR DUPLICATION

PRODUCTION TYPE AND HEAD RAISING ASSEMBLY #18

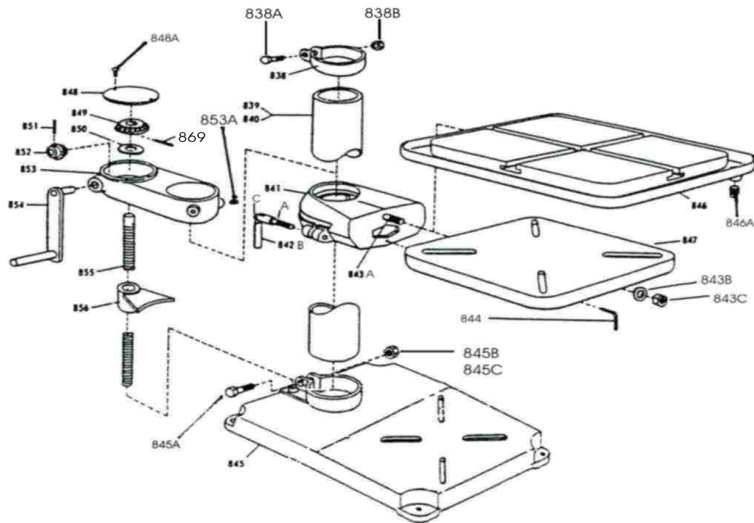


<u>Index</u>	<u>Part</u>	<u>Number</u>
857	Bracket	500885
857A	Soc. Hd. Set Screw	301-68-015
858	Worm	300353
859	Crank	300355
859A	Soc. Hd. Set Screw	301-68-054
860	Adjusting Bearing	10223-1
861	Bearings	204-11-962
862	Rack Pinion	10219-1
862A	Rack Pinion Key	301-25-012
863	Worm Gear	300352
864	Bearing Cover	303537
865	Column, Bench Type with Rack	7D-4137-36
866	Adapter	9990-3
866A	Hex Hd. Cap Screw Nut	301-05-506
866B	Lock Washer	301-87-053
867	Base, Production Type	502348
868	NPT Plug	249-33-155
884	Column, Floor Type with Rack	7D-4137-35

*Exclusive Rights and Ownership of Buffalo Machines, Inc, formerly known as Buffalo Forge Machine Tool Division
Any duplication, sale of this information without written permission by Owner, will constitute legal proceedings in accordance
with the CopyRight laws.*

NOT FOR SALE OR DUPLICATION

STANDARD BENCH AND FLOOR ASSEMBLY #18



<u>Index</u>	<u>Part</u>	<u>Number</u>
838	Safety Collar	252992
838A	Capscrew	301-05-482
838B	Hex Nut	301-42-071
839	Column, Floor Type	300340
840	Column, Bench Type	300311
841	Table Fork	500803
842	Clamp Screw and Handle	303459-1
(842A)	Screw	303459-2
(842B)	Handle	3D-4014-1
(842C)	Pin	301-54-173
843A	Stud	11168-1
843B	Washer	11168-2
843C	Nut	301-42-027
844	Index Pin	300239
845	Base, Standard Bench or Floor	600706
845A	Hex Hd. Cap Screw	301-05-1121
845B	Lock Washer	301-87-042
845C	Hex Nut	301-42-075
846	Production Table	500959
846A	Plug	249-33-155
847	Standard Table	502880
848	Cover	303510
848A	Rd. Hd. Machine Screw	301-34-112
849	Gear	300344-2
850	Oilite Thrust Bearing	204-12-1024
851	Roll Pin	301-54-177
852	Pinion	300348
853	Housing	500796
853A	Setscrew	301-68-1024
854	Handle and Pinion Shaft	254940
855	Screw	303508
856	Raising Screw Nut	303523
869	Roll Pin	301-54-058

*Exclusive Rights and Ownership of Buffalo Machines, Inc, formerly known as Buffalo Forge Machine Tool Division
Any duplication, sale of this information without written permission by Owner, will constitute legal proceedings in accordance
with the Copyright laws.*

NOT FOR SALE OR DUPLICATION